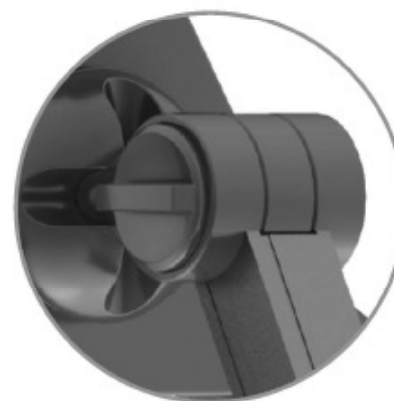




- ① Ball joint allows full 360° rotation.



- ② To change the tension on the ball joint, remove the four silicone plugs on the front of the mount to reveal the Allen head screws. Use an Allen wrench to tighten or loosen the screws, as desired.



- ③ Loosen the knob behind the ball joint to adjust the head-joint angle, then tighten it down when it is at the desired angle.



- ④ Remove the silicone pad on the mounting arm joint to reveal the arm-joint tension screws. Turn the knob for fine adjustments.



- ⑤ Adjust the angle of the tablet feet to hold the tablet firmly in place.



- ⑥ Adjust the top leg to grasp the top of the tablet firmly.



- ⑦ Adjust the arm angles to achieve the optimum viewing angle.



- ⑧ The base rotates 360° and can be easily locked into place by pressing the lock button.