

# HDMI HDBase Extender over single Cat5e/6/7-70m

User manual



Thank you for purchasing this product. For optimum performance and safety, please read the instructions carefully and keep the manual for future reference.

### **Important safety notice**

Please read below safety instructions carefully before installation and operation:

- \* Please pay attention to all the warnings and hints on this device.
- \* Do not expose this unit to rain, moisture and liquid.
- \* Do not put any stuff into the device.
- \* Do not repair or open this device without professional people's guidance.
- \* Make sure good ventilation openings to avoid product overheating damage.
- \* Shut off power and make sure environment is safe before installation.
- \* Do not plug-in/out the connected cables when it is in using.
- \* Make sure the specification matched if using 3<sup>rd</sup> party DC adapters.

## **1. Introduction**

This HDBaseT single network cable extender transmits HDMI signal up to 70meters over cat6 fluently and clearly. It is lossless in signal and supports 3D, 24bits deep color, 4Kx2K, CEC and HDCP.

## **2. Features**

Apply HDBaseT extend technology

Uncompressed HDMI video signal

Support full HD 1080p@60Hz, 3D, 4Kx2K

Extend 1080p signal over cat6a up to 70 meters

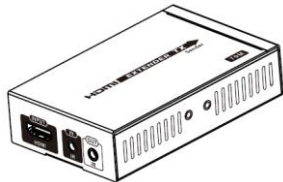
Support bi-directional IR pass back

support HDCP ,CEC, 24 deep color

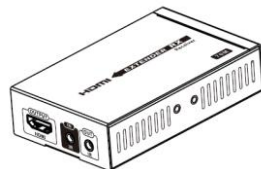
Support uncompressed LPCM audio and compressed DTS-HD, Dolby True HD

Can be powered by network cable. It only needs to input 12V power for either transmitter or receiver for normal working.

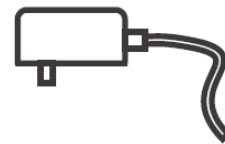
### 3. Package contents



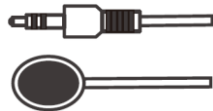
HDMI to HDBaseT TX  
sender\*1pcs



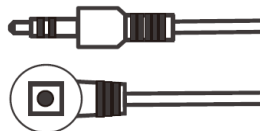
HDBaseT to HDMI RX  
receiver\*1pcs



DC12V/2A \*1pcs



IR blaster extension cable\*1pcs



IR receiver extension cable\*1pcs



User manual\*1pcs

### 4. Installation Requirements

1. HDMI source devices:  
with HDMI OUTPUT interface, DVD, PS3, STB, PC etc.
2. Display devices :  
With HDMI INPUT port, SDTV, HDTV, projector
3. Network cables :  
UTP/STP Cat5e/Cat6/Cat6A/Cat7 network cables, which following the standard of IEEE-568B.

## 5. Panel description

### 5.1 HDMI to HDBaseT TX Sender



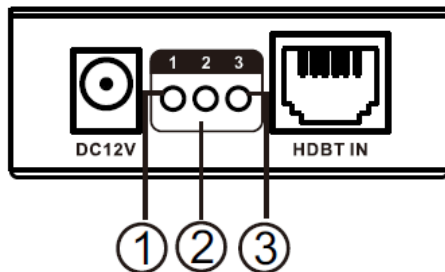
- ① HDMI IN:HDMI signal input to connect with HDMI source device.
- ② IR IN:IR signal input to connect with IR receiver extension cable.
- ③ IR OUT:IR signal output to connect with IR blaster extension cable.
- ④ DC12V:Power input
- ⑤ HDBaseT OUT:HDBaseT signal output

### 5.2 HDBaseT to HDMI RX Receiver



- ① DC12V:Power input
- ② HDBaseT IN:HDBaseT signal input
- ③ HDMI OUT:HDMI signal output to connect with HDMI display device.
- ④ IR IN:IR signal input to connect with IR receiver extension cable.
- ⑤ IR OUT:IR signal output to connect with IR blaster extension cable.

### 5.3 LED indicators working status

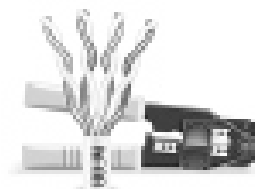


- ① It is lighting on with power on.
- ② When the sender connect the receiver working normal,the No2 lamp flashing status,and when input signal transmission normal the lighting keeps on.
- ③ It is lighting on when RX's HDMI OUT connects with HDMI display device and has HDMI signal output.

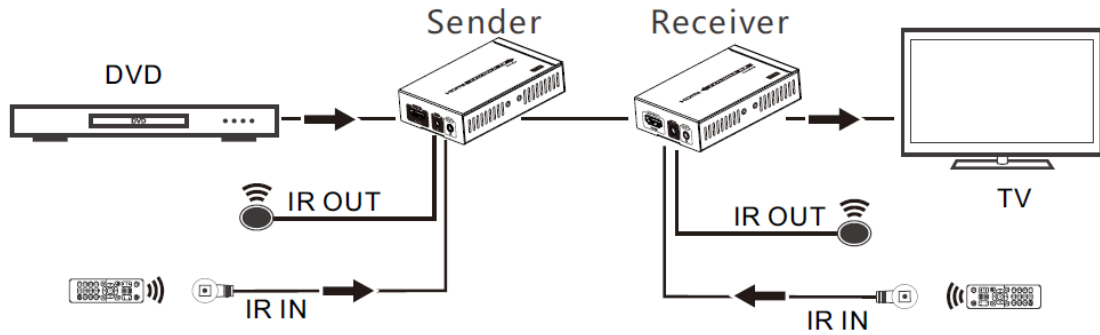
## 6.Installation procedures

### 6.1 To make a Cat5e/6 network cable Follow the standard of IEEE-568B

- 1.white and orange    2. orange    3. white and green    4. blue
5. white and blue    6. green    7. white and brown    8. brown



### 6.2 Connections



### 6.3 Bi-directional IR pass back

- 1) It supports bi-directional IR pass back. User can control DVD at TX end and control TV at RX end.
- 2) If control at RX end, please connect IR blaster extension cable with IR OUT of TX and connect IR receiver extension cable with IR IN of RX. If control at TX end, please connect IR receiver extension cable with IR IN of TX and connect IR blaster extension cable with IR OUT of RX.

## 7. FAQ

Q : No image output?

A : Check the led indicator status to make sure all connections are good and stable.

Q : Signal led " 3" is flashing but no image output?

A : Check if the HDMI display device has been switched to the right HDMI input channel.

Q : Signal led " 2" is flashing but " 3" light is off?

A : Check whether the TX's HDMI IN has signal input and make sure RX's HDMI OUT is well connected with HDMI display.

## 8.Specification

Items	Specifications		
HDMI signal	Compatible with HDCP,support CEC and 24bits deep color		
Resolution Supported	480i@60Hz, 480p@60Hz, 576i@50Hz, 576p@50Hz, 720p@50/60Hz, 1080i@50/60Hz, 1080p@50/60Hz,3D,4Kx2K@24/25/30/60Hz		
Audio	LPCM ,DTS-HD, Dolby True HD		
Network cable	CAT5E, CAT6, CAT6A, CAT7		
Transmission length	CAT5E	60m	UP to 1080p@60Hz 36bpp
		35m	1080p@60Hz 48bpp,1080p@60Hz 3D,4Kx2K@30Hz/60Hz
	CAT6	70m	UP to 1080p@60Hz 36bpp
		40m	1080p@60Hz 48bpp,1080p@60Hz 3D,4Kx2K@30Hz/60Hz
Infrared back	Support 20~60kHz wide frequency devices and Bi-directional IR transmission		
Power supply	DC12V/2A *1pcs		
Power consumption	<8W		
Product dimension	98.5(L)x66.5(W)x23(H)mm *2pcs		
Enclosure material	Metal		
Weight	TX:79g RX:107g		
Color	Black		

## Disclaimer

\* The product name and brand name may be registered trademark of related manufacturers.TM and ® may be omitted on the user manual. The pictures on the user manual are just for reference, and there may be some slight difference with the real products.

We reserve the rights to make changes without further notice to a product or system described herein to improve reliability, function or design.