

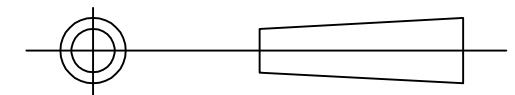
PIN ASSIGNMENT:

TYPE-C	A1,B1,A12,B12	A4,B9,B4,A9	A6	A7	shell
WIRE	24AWG(BLACK)+D	24AWG(RED)	1P		
TYPE-A	4	1	3	2	shell

CUSTOMER P/N	length
FE-USB-CA-6IN	6(IN)105MM ± 30MM
FE-USB-CA-01	1.5(FT)460MM ± 30MM
FE-USB-CA-02	2(FT)605MM ± 30MM
FE-USB-CA-03	3(FT)915MM ± 30MM
FE-USB-CA-06	6(FT)1830MM ± 50MM
FE-USB-CA-10	10(FT)3050MM ± 50MM

MY CABLE MART LLC

Title:
USB2.0 CABLE AM TO TYPE-CM



Customer:	Page:1/1	Drawn BY:CLR
Customer P/N:	REV:A	Check BY:DYH
Date:2018.08.08	Drawing NO.:FUAC02	Unit:mm
		Appd BY:

8		
7		
6		
5		PE BAG+LABEL
4		PCV45Pa Black
3		USB2.0 CM 56K
2		USB2.0 AM
1		USB2.0 cable 28AWG(10/0.12BC)*1P+24AWG(28/0.1BC) *2C+AL+D(10/0.1BC) OD: 4.0mm Black
NO.	Material	Description