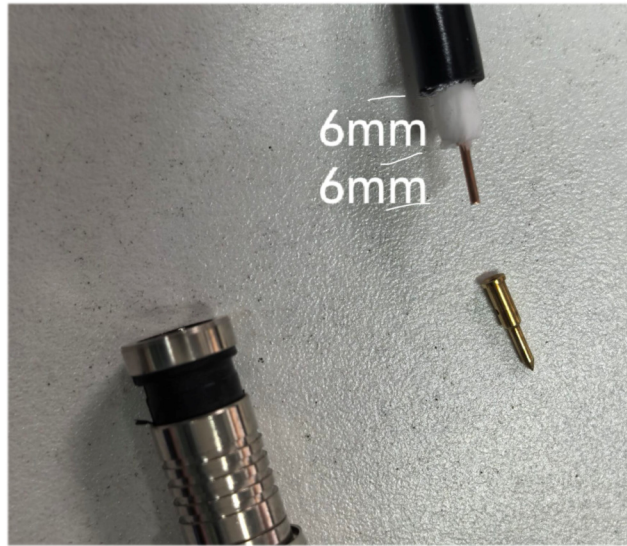


Installation of the FE-ADT-366 (BNC/STI) Compression Connector to SDI Bulk Cable

Connecting the FE-ADT-366 compression connector to SDI RG6 cable requires some patience and precision trimming of the SDI RG6 bulk cable, and the use of a good quality compression connector that will properly grasp the “non-pin” end of the connector itself.

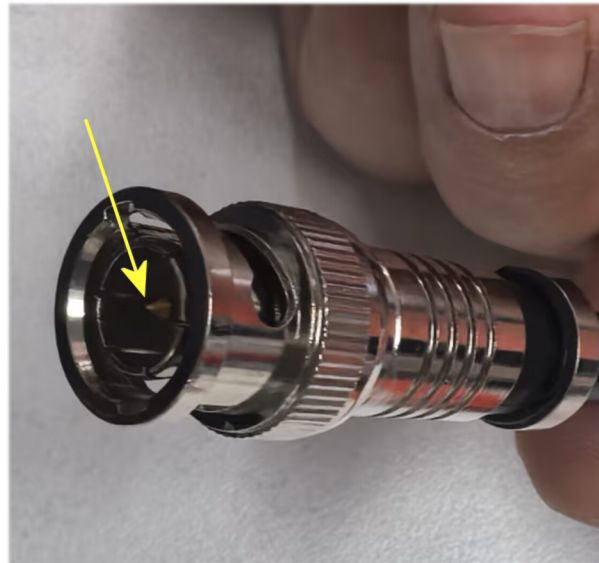
Step 1: Trim the outer insulation, braided shield, and foil from the bulk cable to 1/2inch (or about 12 mm). Then trim the white dielectric material exposing 1/4inch (or about 6 mm) of the center core copper:



Step 2: Place the center pin insert FIRMLY over the top of the exposed center core copper:



Step 3: Push the cable with the center pin into the FE-ADT-366 connector carefully, making sure that the center pin pushes through the dielectric insulation on the connector. The center pin should protrude to the same length as the connector end:



Step 4: Insert the cable into your compression tool. Only use a compression tool that surrounds at least 60% of the non-tip end of the compression connection and whose lips fit fairly snug to the cable itself, as shown at the arrow locations below:



Step 5: Squeeze the compression tool so that the non-pin metal ring is pulled into the connector end. A small amount of black PVC (about 2 mm) will remain. Do NOT over-squeeze the connector end:



This should be your finished product:

