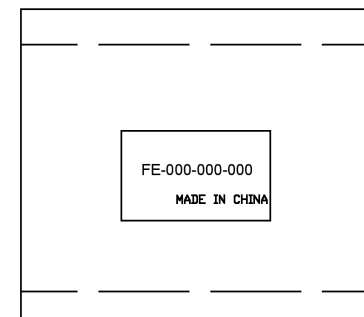


PIN ASSIGNMENT

|              |    |    |    |      |       |       |    |    |    |    |   |
|--------------|----|----|----|------|-------|-------|----|----|----|----|---|
| HD15P FEMALE | 1  | 2  | 3  | 5+10 | 6+7+8 | 9     | 12 | 13 | 14 | 15 | G |
| DVI24+5 MALE | C1 | C2 | C3 | 15   | C5    | 14+16 | 7  | C4 | 8  | 6  | G |

- NOTES:  
 1. 100%OPEN&SHORT TESTING  
 2. VOL TAGE: 300V DC  
 3. INSULATION RESISTANCE: 20M ohm



|     |          |                     |
|-----|----------|---------------------|
| 8   |          |                     |
| 7   |          |                     |
| 6   |          | PE BAG+LABEL        |
| 5   |          | #4-40 Screw         |
| 4   |          | PCV45Pa Black       |
| 3   |          | PE                  |
| 2   |          | DVI 24+5 Male       |
| 1   |          | HDB15 Female + NUTS |
| NO. | Material | Description         |

**My Cable Mart, LLC**

Title: **DVI24+5 M TO VGA F ADAPTER**

Customer: MY CABLE MART LLC  
 Customer P/N: FE-ADT-119  
 Date: 2016.10.24

Page: 1/1  
 REV: A  
 Drawing NO.: FDDV02

Drawn BY: CLR  
 Check BY: DYH  
 Appd BY: