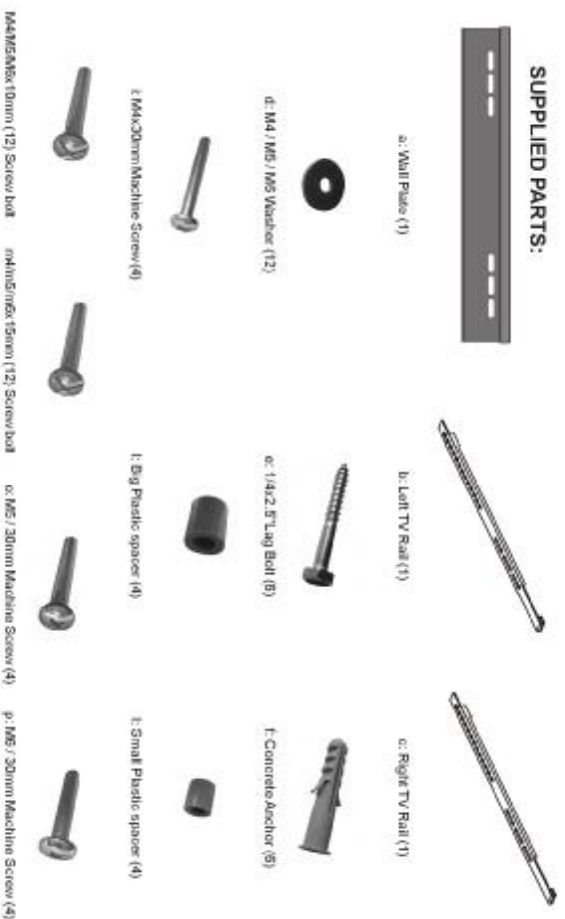


# ASSEMBLY INSTRUCTIONS FOR FIXED FLAT PANEL WALL MOUNT

This product is designed to mount flat panel televisions weighing up to 100lb to a vertical wall.  
**Safety Warning:** Be careful to make sure there are no missing or defective parts. Never use defective parts. Improper installation may cause damage or serious injury. Note: The included hardware is for mounting on walls with wood stud construction. If you are uncertain about the nature of your wall, consult an expert. Please consult your hardware or installation professional for proper mounting to other types of walls. The supplied hardware is not for steel.

## SUPPLIED PARTS:



**1. BRICK, SOLID CONCRETE AND CONCRETE BLOCK MOUNTING:** Use the Wall Plate (a) as a template to mark 6 hole locations on the wall. Pre-Drill these holes with a 10mm masonry bit to at least 60mm in depth. Insert a Concrete Anchor (f) into each of these holes. Pre-Drill these holes with a 5mm flush with the concrete surface even if there is a layer of drywall or other material in front. Attach the Wall Plate to the wall using 6 Lag bolts (e) and 6 Lag Bolt Washers (d).

Diagram 1-A

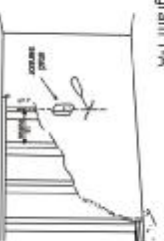
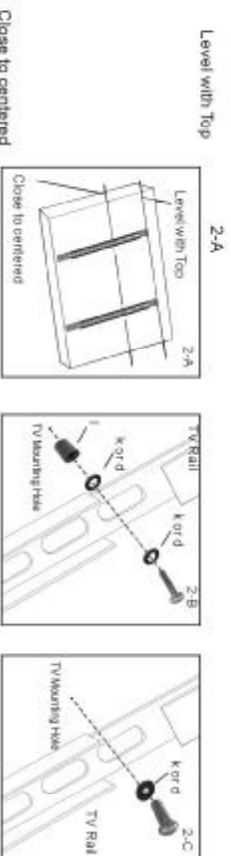


Diagram 1-B

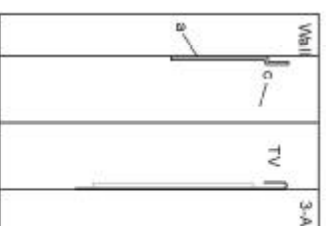


**1b. MOUNTING THE WALL PLATE:** The wall plate (a) MUST to be mounted to two wood studs. Use a high quality stud sensor to locate two adjacent studs. It is a good idea to verify where the studs are located with an awl or thin nail shown in diagram 1-A. Pre-drill a 3mm deep hole at the desired height in each stud using a 4mm drill bit. Make sure these holes are level. Use the Wall Plate as a template to mark the location of the second hole in each stud. Pre-drill these two holes using the 4 drill bit as well. Attach the Wall Plate to the wall using the four Lag Bolts (e). Make sure the Wall Plate is oriented so the flat surface in the center of the plate is against the wall shown in diagram B-1

**2. MOUNT THE TV RAILS TO THE BACK OF YOUR FLAT PANEL TV:** Make sure the TV Rails (b and c) are mounted at an equal distance from the top of the TV and as close to the center as possible as shown in diagram 2-A. Knobs should face the outside of the television. M4, M5 and M6 bolts are provided. Other sizes are available at your local hardware store. A Plastic Spacer (i) is provided for use with M4 and M5. TV mount bolts on TV's with curved or recessed back panels as shown in diagram 2-B. If you are mounting to a television with a flat back you will not need a plastic spacer as shown in diagram 2-C. **Make sure these bolts are right!** Some televisions have shallow threaded inserts. We have provided 4 extra M4/M5 washers you may use to offset this if the provided bolts are too long.



**3. HANG THE TV ONTO THE WALL PLATE:** First hook the TV Rails (b and c) over the top of the wall plate (a) as shown in diagram 3-A.



**Right (4-A):** Front view of a fixed plasma mount assembled.

