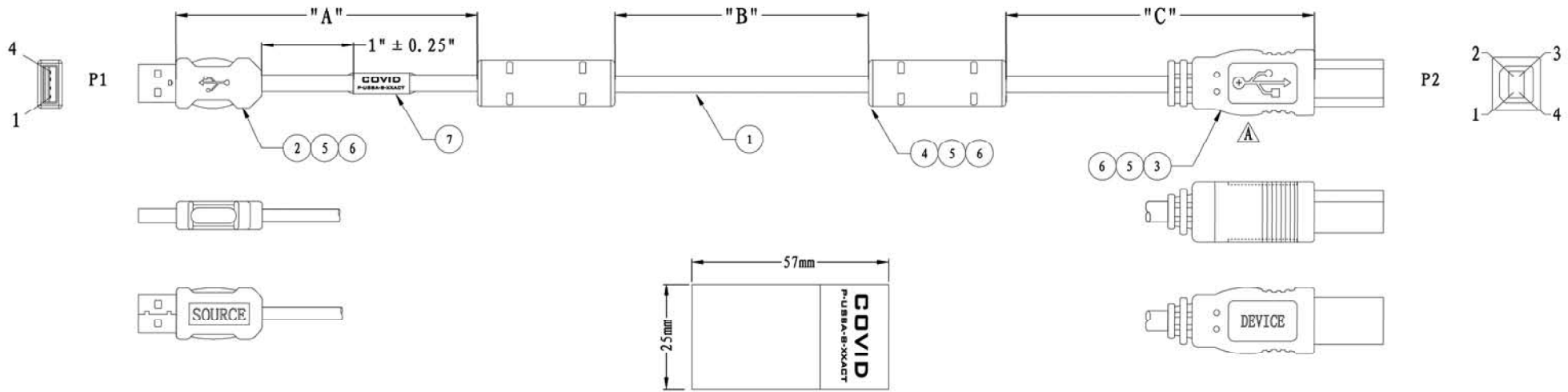


REV	DESCRIPTION	DATE
0	ENGINEERING RELEASE	2012-09-25
A	CHANGE MOLD	2012-11-01
B	CHANGE DIMENSION	2013-01-15
C	ADDITION LABEL	2013-01-17



3) CABLE ASSEMBLY TO BE 100% TESTED FOR SHORTS, OPENS, AND MISS WIRES. FINAL TEST WILL BE 100% HI POT AT 300 VOLTS FOR 100mS.

2) Sn SOLDER TO BE USED FOR ALL SOLDER CONNECTIONS. (Sn/Pb SOLDER IS NOT PERMITTED)

1) CABLE ASSEMBLY TO BE WIRED IN ACCORDANCE TO THE WIRE DIAGRAM.

NOTES: UNLESS OTHERWISE SPECIFIED

COVID P/N	DIMENSION "A"	DIMENSION "B"	DIMENSION "C"
P-USBA-B-75ACT	240" ± 5"	480" ± 6"	180" ± 2"
P-USBA-B-50ACT	180" ± 4"	360" ± 5"	60" ± 2"

TABULATION BLOCK

WIRE DIAGRAM		
P1	COLOR CODE	P2
1	RED	1
2	WHITE	2
3	GREEN	3
4	BLACK	4
SHELL	DRAIL	SHELL

NO.	QTY	SPECIFICATION
⑦	1	LABEL, PAPER WITH ADHESIVE BACKING
⑥	A/R	OVER-MOLD, PVC, SHORE A=91 ± 3A, COLOR: DARK BLUE
⑤	A/R	PER-MOLD, LD-PE
④	2	PCB, FB4. 1PCB
③	1	USB B TYPE MALE, TERMINAL GOLD PLATED 3U", SHELL GOLD FLASH, INSULATION BLACK
②	1	CONNECTOR, USB A TYPE MALE
①	A/R	CABLE, 24AWG*1P+22AWG*2C, CMP COLOR: DARK BLUE

TITLE				DWG NO. :		PD001210		DATE	
NEW ACTIVE SUB				APPROVED:		Mike		2013-01-17	
ITEM: P-USBA-B-XXACT				CHECKED:		Colin		2013-01-17	
P/N:				DRAWING:		Dandan		2013-01-17	
UNIT	SCALE	A4	EDIT	C		<b>My Cable Mart</b>			
mm	NONE		PAGE	1 OF 1					