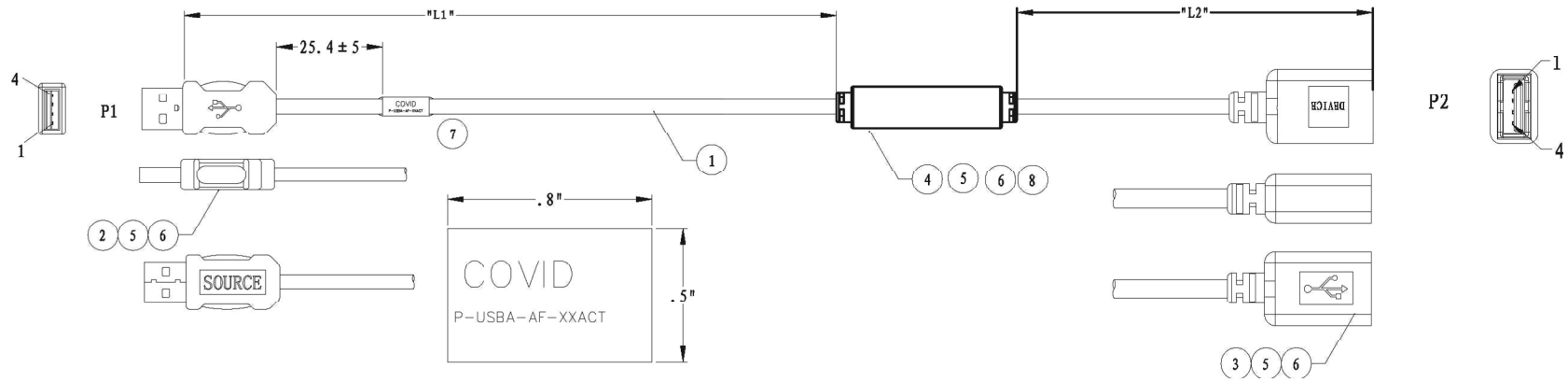
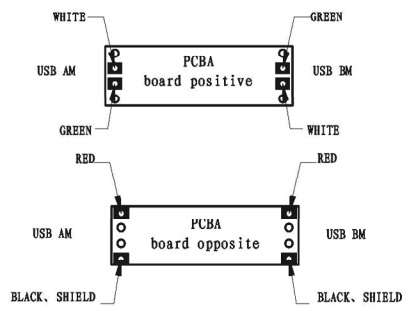




REV	DESCRIPTION	DATE
0	ENGINEERING RELEASE	2014-2-17
A	CHANGE THE PCB IS FE4.1	2014-2-27
B	change the sr model, and add copper	2014-4-22



P-USBA-AF-25ACT	6096 ± 80	1524 ± 30
P-USBA-AF-35ACT	9144 ± 120	1524 ± 50
ITEM (P/N)	"L1" (mm)	"L2" (mm)



WIRE DIAGRAM				
P1	COLOR		COLOR	S1
1	RED	—	RED	1
2	WHITE	⊗	WHITE	2
3	GREEN	⊗	GREEN	3
4	BLACK	—	BLACK	4
SHELL	SHIELD	—	SHIELD	SHELL

2) CABLE ASSEMBLY TO BE 100% TESTED FOR SHORTS, SHORTS, OPENS, AND MISS WIRES. FINAL TEST WILL BE 100% HI POT AT 300 VOLTS FOR 100mS.

1) CABLE ASSEMBLY TO BE WIRED IN ACCORDANCE TO THE WIRE DIAGRAM.

NOTES: UNLESS OTHERWISE SPECIFIED

ITEM	QTY	DESCRIPTION
⑧	A/R	TWO SIDED CONDUCTIVE COPPER ②
⑦	1	STICKER, TRANSPARENT STICKERS
⑥	A/R	MOLDING COMPOUND, OVER-MOLD, PVC, SHORE A=91±3A ,DARK BLUE
⑤	A/R	MOLDING COMPOUND, PRE-MOLD,POLYETHYLENE,
④	1	PCB,FE4.1 PCBA
③	1	CONNECTOR,USB AF SINGLE PIECE, PIN GOLD PLATED 30U", STEEL NICKEL PLATED
②	1	CONNECTOR,USB AM SINGLE PIECE, PIN GOLD PLATED 30U ", STEEL NICKEL PLATED
①	A/R	CABLE, 24AWG*1P+22AWG*2C CMP
PARTS LIST		

TITLE		DWG NO. :		PD002971		DATE	
USB ACTIVE		APPROVED:		HEYONG		2014-2-27	
ITEM: /		CHECKED:		ZHANGHZ		2014-2-27	
P/N: /		DRAWING:		CAIYUNYANG		2014-2-27	
UNIT	SCALE	A4	EDIT	B	My Cable Mart		
INCH	NONE	⊕	PAGE 1	OF 1			