

## Specifications

Supported distance .....	up to 1,000 feet
Supported resolutions .....	3D, 4K, 1080p, 720p, 480p
Supported features .....	HDMI High Speed HDCP EDID CEC Deep Color
Audio Return Channel .....	Yes
LED status indicator .....	at TX & RX HDMI connectors; powered LED verifies system connectivity
Power .....	TX: DC5V 0.5W / RX: DC5V 0.5W
Humidity .....	0% - 90% RH
Rating .....	Plenum Rated
Fiber optic cable pull strength .....	60 pounds
Fiber optic plug dimension .....	7 x 9 x 25 mm / .27" x .35" x .98"
HDMI connector dimension .....	8 x 20 x 28 mm / .31" x .78" x 1.10"

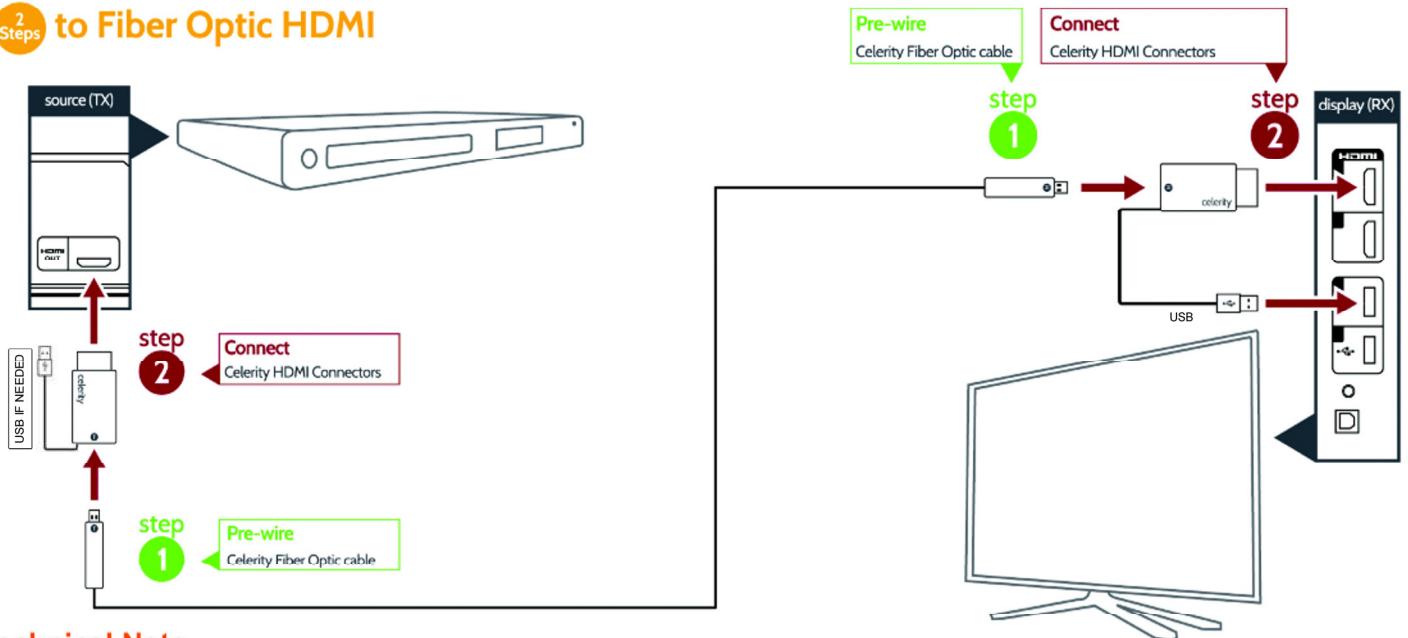
## Available lengths

12.2m.....	40ft.
18.2m.....	60ft.
24.3m.....	80ft.
30.4m.....	100ft.
48.7m.....	160ft.
60.9m.....	200ft.
152.4m.....	500ft.
304.8m.....	1000ft.

## Custom lengths

Available in 50ft. (15.2m) increments  
from 250ft. to 950ft. (76.2m to 290m)

## 2 Steps to Fiber Optic HDMI



## Technical Note

Celerity Technologies' Fiber Optic Plug terminating each end of the Celerity Fiber Optic HDMI cable supports proprietary technology for HDMI over optical fiber. While the plug may appear similar to that of micro-HDMI or mini-USB, it does not support any technical attributes of either connector. The Celerity fiber optic plug supports only proprietary Celerity technology and is connected to the Celerity Fiber Optic HDMI connector according to the user guide.