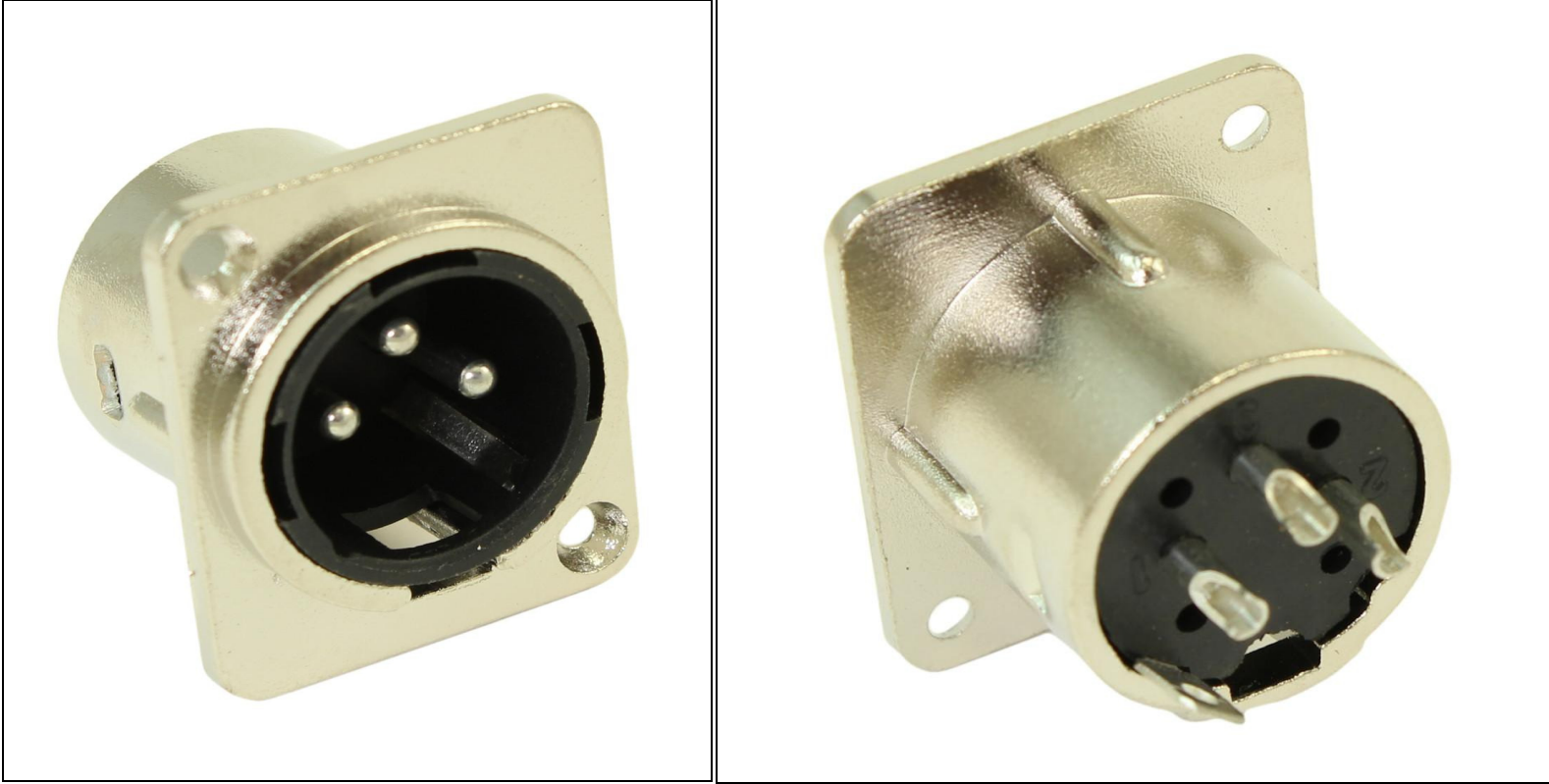


WALLPLATE: XLR MALE D-SERIES/NEUTRIK PANEL MOUNT CONNECTOR, METAL SHELL



Lengths Available:			
Colors Available:			
Part Numbers this model:		FE-PAN-XLR-M	
Sales Category:	Wallplate: Standard	Wire Gauge (AWG):	Not Specific / Not Applicable
Connector A:	XLR (3-Pin) Male	Specification:	
Connector B:	*Not Applicable*	Number Ports:	N/A
Export Tariff Code (HST):	8536694030	Transfer Rate:	
Feature / Style:		Images Length/Size Shown:	EA
# Positions:		Shielding:	
Convert From/To:		Type:	Coupler

Create your own custom D-Series type wall-plate with our professional grade XLR Male Connector Insert. "D" Series connectors and plates follow a standard established by Neutrik(TM) for panel-mounting various professional audio/video connectors into a precise 23.8mm hole, and provide for holes to insert 2 nuts and bolts per connector

Specifications

- Steel Outer Shell (Shielded)
- Attaches to a D-Series wall-plate (sold separately)
- XLR Male (3 hole) connector type
- Mounting screws/nuts NOT included