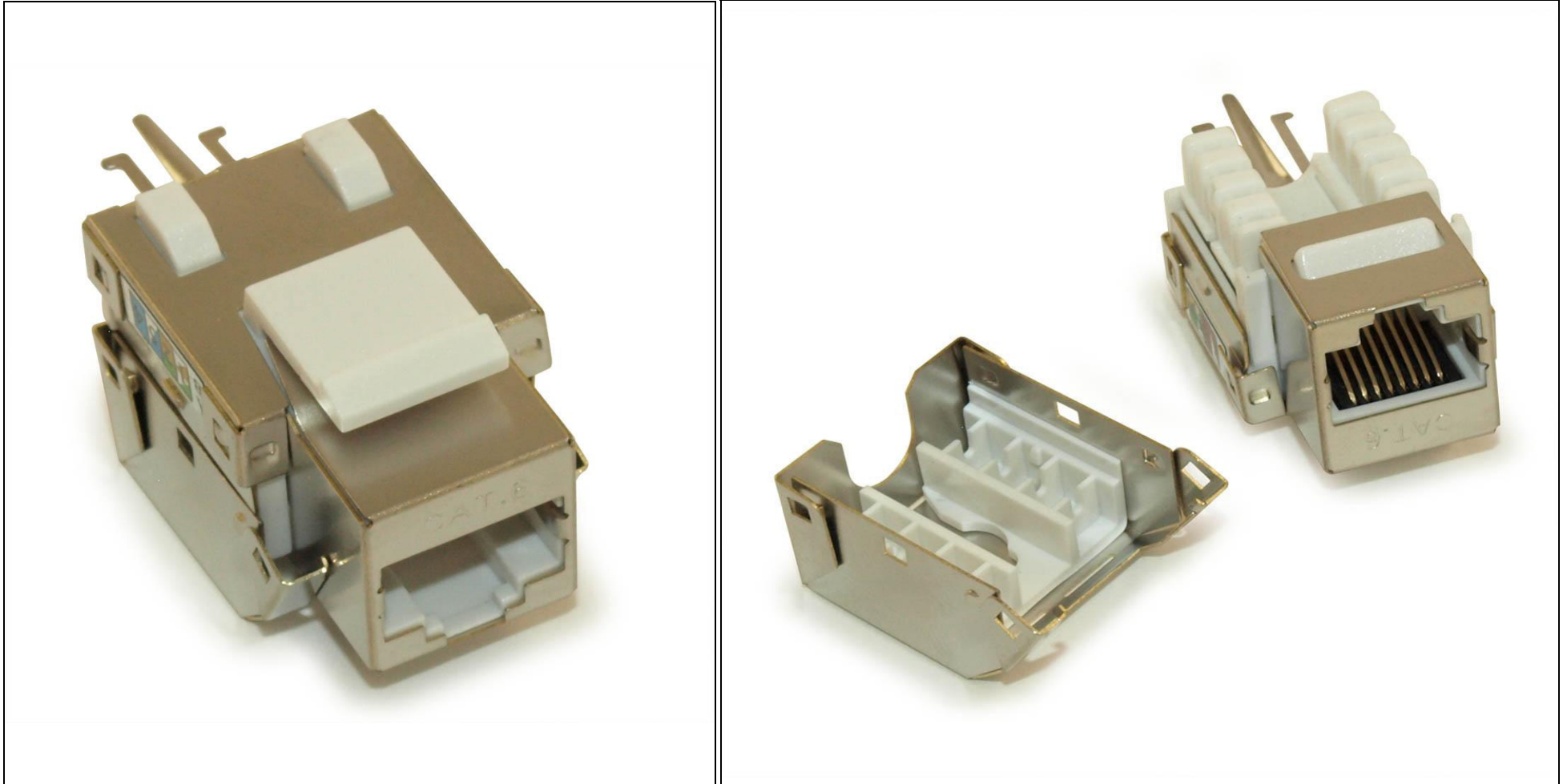


MyCableMart.com

Your Home Theatre Connectivity Experts
6224 Bury Dr, Eden Prairie MN 55346 P. 952-486-8736

KEYSTONE JACK INSERT/PUNCH-DOWN - CAT 6 SHIELDED RJ45 NETWORKING



Lengths Available:

Colors Available: Blue, Gray, Green, Ivory, Metallic, Orange, Red, White, Yellow,

Part Numbers this model: FE-KEY-C6S

Sales Category:	Wallplate: Keystone	Wire Gauge (AWG):	Not Specific / Not Applicable
Connector A:	RJ45 Ethernet Female	Specification:	
Connector B:	RJ45 Ethernet Female	Number Ports:	N/A
Export Tariff Code (HST):	8536694030	Transfer Rate:	
Feature / Style:		Images Length/Size Shown:	EA
# Positions:		Shielding:	
Convert From/To:		Type:	

Cat.6 RJ-45 shielded keystone jack is 8-position 8-conductor (8P8C) and designed for computer networking. It is engineered to provide full shield protection and reliability, supporting up to Gigabit Ethernet applications. The advanced printed circuit board design is tuned to provide optimum signal quality with maximum headroom, allowing it to exceed TIA/EIA Category 6 performance standards. Use with shielded Ethernet cable.

Specifications and Details

- CAT 6 rated connectors provide excellent performance for data networks requiring maximum speed and bandwidth
- PCB technology provides maximum performance and superior signal quality
- Terminate with 110 punch down tool
- 4 x 4 termination layout
- Includes an integrated TIA-568A/B color wiring diagram
- Backwards compatible to all lower rated category components
- Compatible with MOST wall-plates, surface mount boxes, and blank patch panels
- Termination cap included
- Individually packaged

CAUTION: Due to the wider format of this keystone, "side-by-side" installation into certain narrow formatted wall-plates or patch panels may not be possible