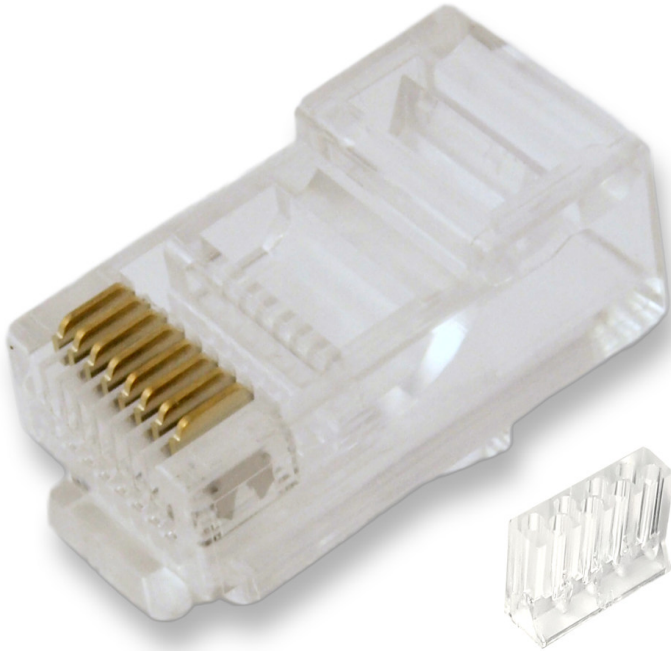


## RJ45 MODULAR PLUGS FOR CAT6 SOLID WIRE WITH LOAD-BAR, PACK OF 20



<b>Lengths Available:</b>	ea, ea,		
<b>Colors Available:</b>			
<b>Part Numbers this model:</b>	FE-C6-RJ45-20L, FE-C6-RJ45-100L,		
<b>Sales Category:</b>	CAT 5E Networking Cables	<b>Wire Gauge (AWG):</b>	Not Specific / Not Applicable
<b>Connector A:</b>	RJ45 Ethernet Male	<b>Specification:</b>	
<b>Connector B:</b>	RJ45 Ethernet Male	<b>Number Ports:</b>	N/A
<b>Export Tariff Code (HST):</b>	8536694010	<b>Transfer Rate:</b>	
<b>Feature / Style:</b>		<b>Images Length/Size Shown:</b>	EA
<b># Positions:</b>	8p8c (RJ45, Ethernet)	<b>Shielding:</b>	Unshielded
<b>Convert From/To:</b>		<b>Type:</b>	

OEM Pack of 20 Qty. RJ45 8P8C Network Cable Heads Application for Cat6 Cable with "load-bar" allowing for quick and easy wire separation before you insert them into the connector end

- 50u rating - Extremely high quality module plugs
- For Solid Cable (will not work with "stranded")
- 20 RJ45 connectors and load-bars included
- Gold plated leads for better data transmitting and higher signal strength
- Load-bar for simplified cable separation and inserting into the connector

Crimping tool required (not included)