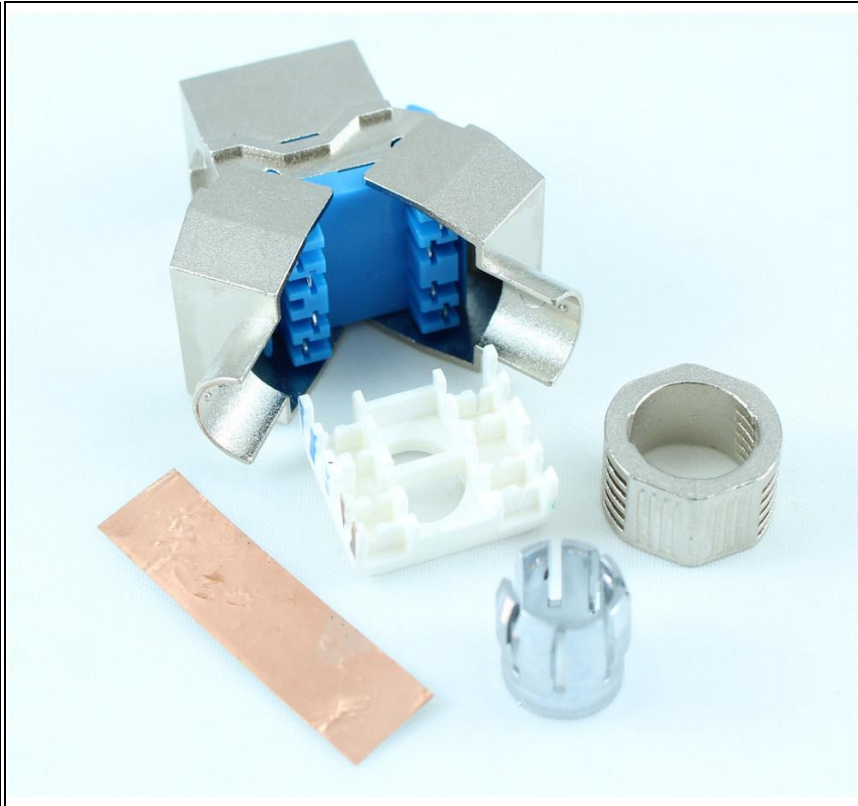
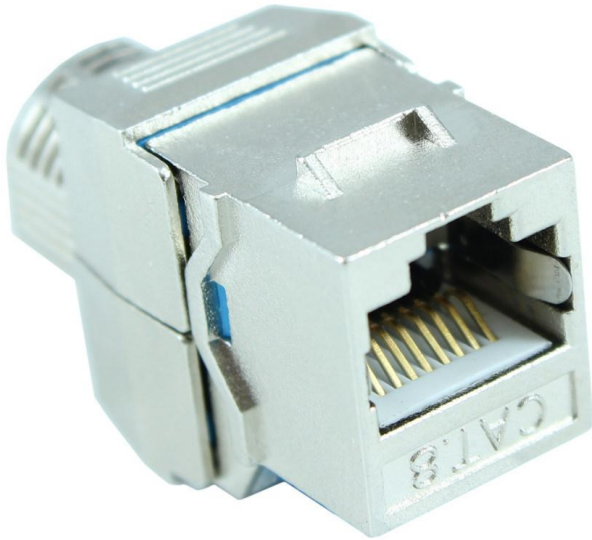


KEYSTONE JACK INSERT/PUNCH-DOWN - CAT 8 RJ45 NETWORKING, DIE-CAST



Lengths Available:			
Colors Available:			
Part Numbers this model:	FE-ADT-415		
Sales Category:	Wallplate: Keystone	Wire Gauge (AWG):	Not Specific / Not Applicable
Connector A:	RJ45 Ethernet Male	Specification:	
Connector B:	RJ45 Ethernet Male	Number Ports:	N/A
Export Tariff Code (HST):	8536694030	Transfer Rate:	
Feature / Style:		Images Length/Size Shown:	EA
# Positions:		Shielding:	
Convert From/To:		Type:	

This fully shielded CAT 8 jack is perfect for shielded networks. The die cast body is backwards compatible with components and systems of lower performing categories. Use in standard keystone wall-plates, patch panels, or surface mount boxes. Documentation guide included to ease installation.

Features and Specifications:

- 110 IDC fully shielded 180-degree punch down jack
- 8-position 8-conductor (8P8C)
- 568A and 568B wiring compatible
- Meets or exceeds TIA/EIA 568B industry standard
- Suitable for CAT 7 Networks with support to 40Gbps
- RoHS compliant