



**HDMI Elite Series Eye Testing Results
 Conducted by E&E Co, LTD, Taiwan
 Test Date: 03/27/2012**

Tested by:
 E&E Co Ltd

Test Equipment:
 Agilent Technologies, certified by HDMI LLC to conduct HDMI v1.4A testing.

Results have been verified and audited by My Cable Mart.

Eye test results test the PER CHANNEL capabilities of HDMI cables. HDMI cables offer 3 video data channels. Net speed is calculated by channel speed x 3 = Net Cable Speed.

Test Equipment Information

ID	Product and Serial Number	Description with series number	Manufacture
1	ENA-TDR(MY46111887)	Data Timing Generator	Agilent Technologies
2	E5071C(MY46111887)	Time Domain Reflector(TDR)	Agilent Technologies

Test Summary:

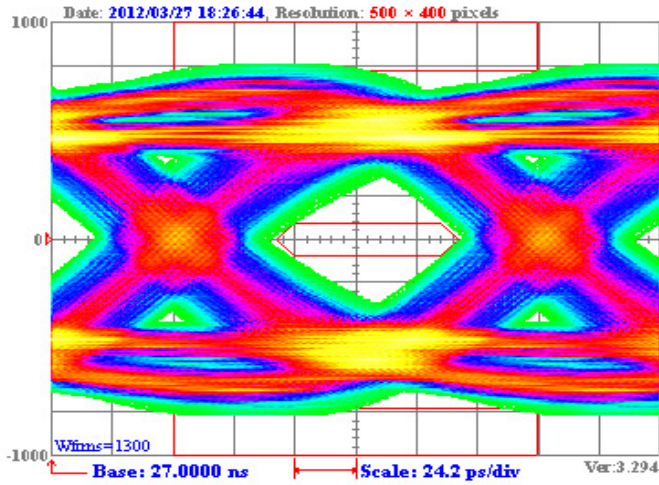
Cable Model	Description	Data Bandwidth per Channel Gbps	Total Data Bandwidth Gbps
FR-HHL14-01	1.5ft 28AWG Elite Series, Silver Plated Copper HDMI Cable	6.9	20.7
FR-HHL14-03	3ft 28AWG Elite Series, Silver Plated Copper HDMI Cable	6.7	20.1
FR-HHL14-06	6ft 28AWG Elite Series, Silver Plated Copper HDMI Cable	6.5	19.5
FR-HHL14-08	8ft 28AWG Elite Series, Silver Plated Copper HDMI Cable	5.5	16.5
FR-HHL14-10	10ft 28AWG Elite Series, Silver Plated Copper HDMI Cable	5.0	15.0
FR-HHL14-12	12ft 28AWG Elite Series, Silver Plated Copper HDMI Cable	4.2	12.6
FR-HHL14-15	15ft 28AWG Elite Series, Silver Plated Copper HDMI Cable with Redmere 1689 Chipset	4.3	12.9
FR-HHL14-20	20ft 28AWG Elite Series, Silver Plated Copper HDMI Cable with Redmere 1689 Chipset	3.6	10.8

1.5ft 28AWG Elite Series, Silver Plated Copper HDMI Cable

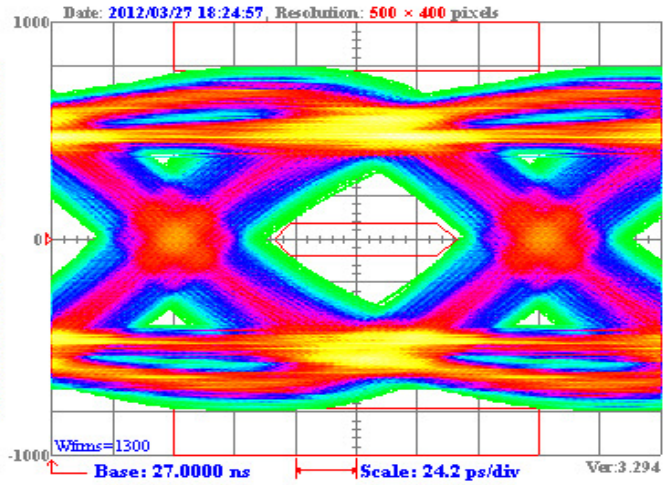


E&E Co., LTD.

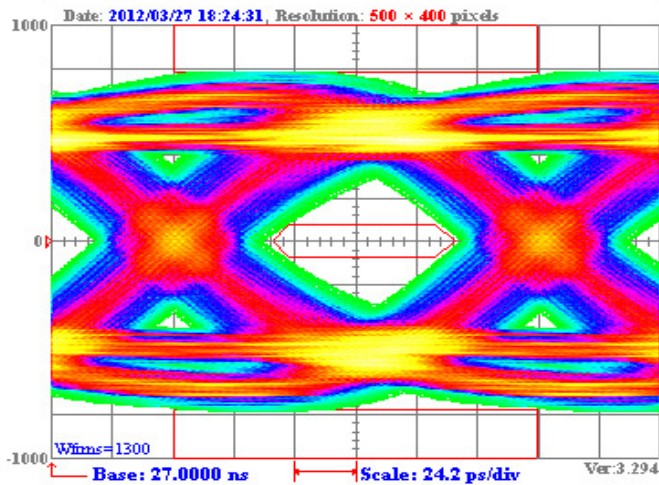
HDMI Eye Diagram Graphic result



Parameter Name: HDMI Eye Diagram D0
Display Mode: Not a standard mode
dRate: 6.9 Gbits/s; 144.9 ps V: 400 mV; With HDMI AEQ; Off: 0 mV
CAL: N/A, JGen: 0.30 TBit by Tp Result: Pass



Parameter Name: HDMI Eye Diagram D1
Display Mode: Not a standard mode
dRate: 6.9 Gbits/s; 144.9 ps V: 400 mV; With HDMI AEQ; Off: 0 mV
CAL: N/A, JGen: 0.30 TBit by Tp Result: Pass



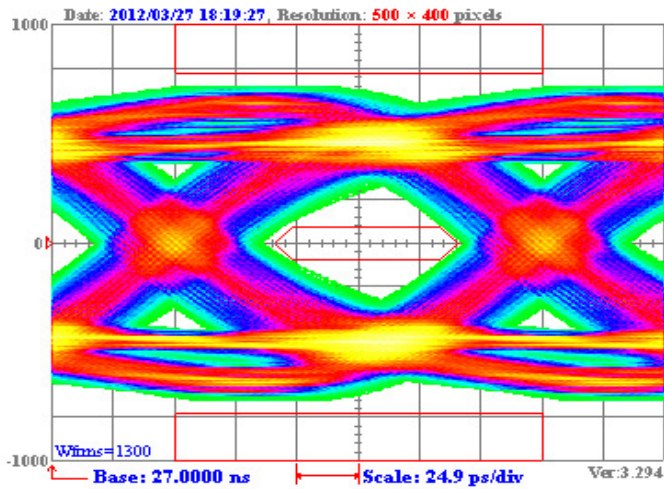
Parameter Name: HDMI Eye Diagram D2
Display Mode: Not a standard mode
dRate: 6.9 Gbits/s; 144.9 ps V: 400 mV; With HDMI AEQ; Off: 0 mV
CAL: N/A, JGen: 0.30 TBit by Tp Result: Pass

3ft 28AWG Elite Series, Silver Plated Copper HDMI Cable

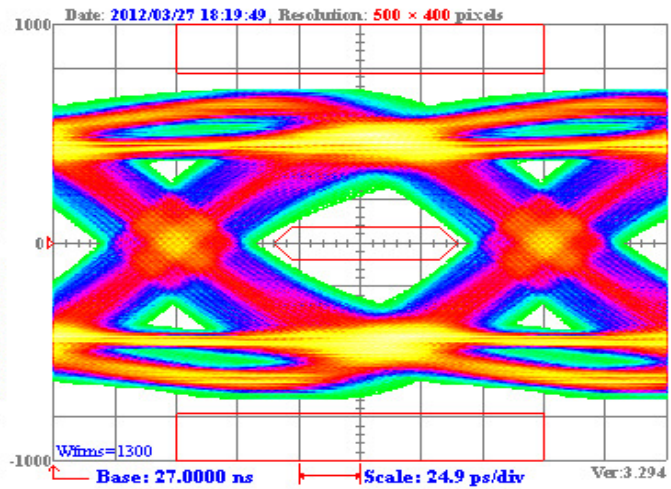


E&E Co., LTD.

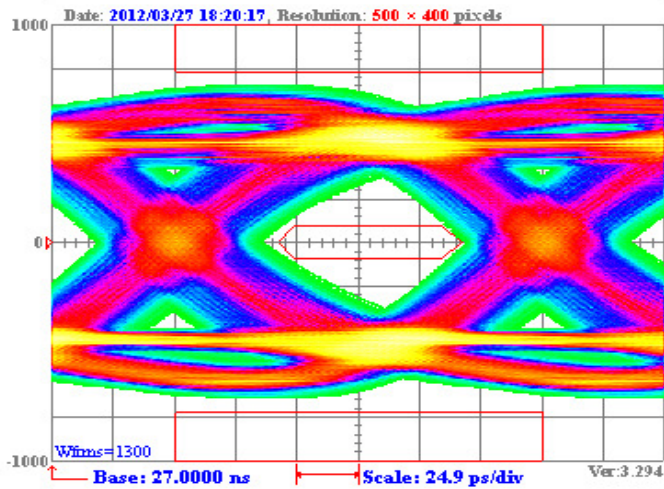
HDMI Eye Diagram Graphic result



Parameter Name: HDMI Eye Diagram D0	
Display Mode: Not a standard mode	
dRate: 6.7 Gbits/s; 149.3 ps	V: 400 mV; With HDMI AEQ; Off: 0 mV
CAL: N/A, JGen: 0.30TBit by Tp Result: Pass	



Parameter Name: HDMI Eye Diagram D1	
Display Mode: Not a standard mode	
dRate: 6.7 Gbits/s; 149.3 ps	V: 400 mV; With HDMI AEQ; Off: 0 mV
CAL: N/A, JGen: 0.30TBit by Tp Result: Pass	



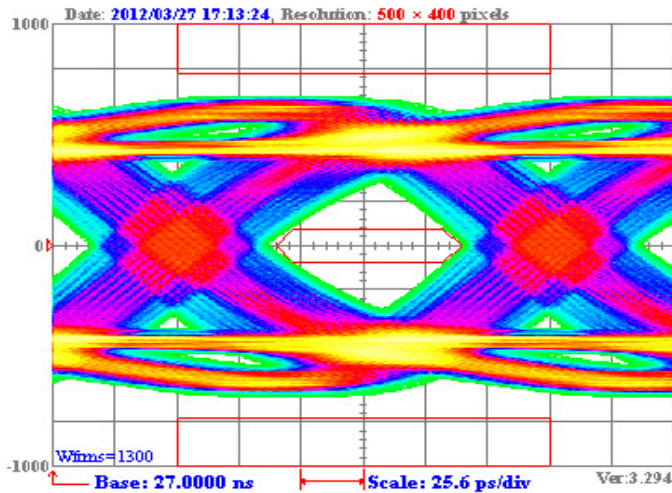
Parameter Name: HDMI Eye Diagram D2	
Display Mode: Not a standard mode	
dRate: 6.7 Gbits/s; 149.3 ps	V: 400 mV; With HDMI AEQ; Off: 0 mV
CAL: N/A, JGen: 0.30TBit by Tp Result: Pass	

6ft 28AWG Elite Series, Silver Plated Copper HDMI Cable

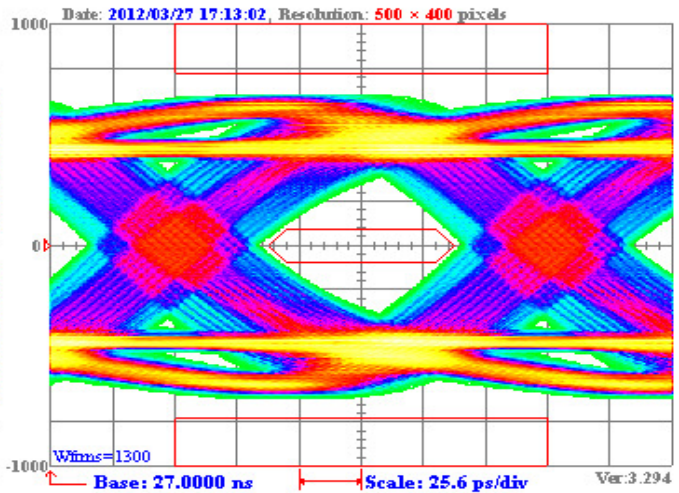


E&E Co., LTD.

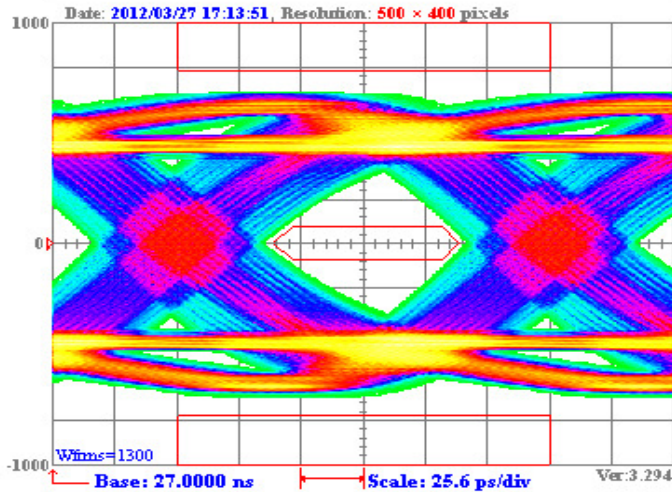
HDMI Eye Diagram Graphic result



Parameter Name: HDMI Eye Diagram D0
Display Mode: Not a standard mode
dRate: 6.5 Gbits/s; 153.9 ps
V: 400 mV; With HDMI AEQ; Off: 0 mV
CAL: DONE, JGen: 0.30TBit by T Result: Pass



Parameter Name: HDMI Eye Diagram D1
Display Mode: Not a standard mode
dRate: 6.5 Gbits/s; 153.9 ps
V: 400 mV; With HDMI AEQ; Off: 0 mV
CAL: DONE, JGen: 0.30TBit by T Result: Pass



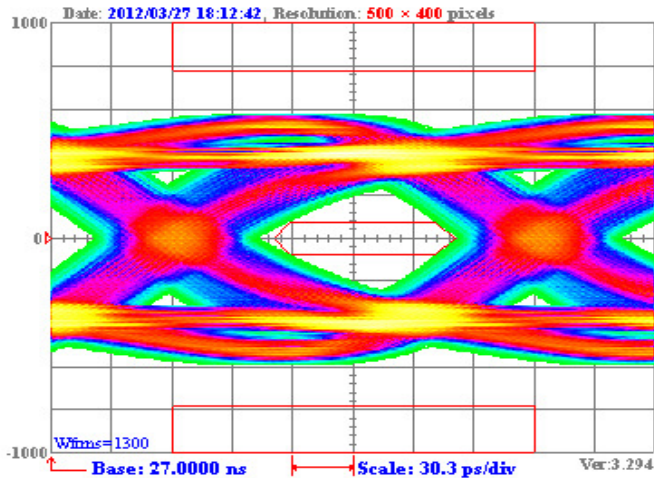
Parameter Name: HDMI Eye Diagram D2
Display Mode: Not a standard mode
dRate: 6.5 Gbits/s; 153.9 ps
V: 400 mV; With HDMI AEQ; Off: 0 mV
CAL: DONE, JGen: 0.30TBit by T Result: Pass

8ft 28AWG Elite Series, Silver Plated Copper HDMI Cable

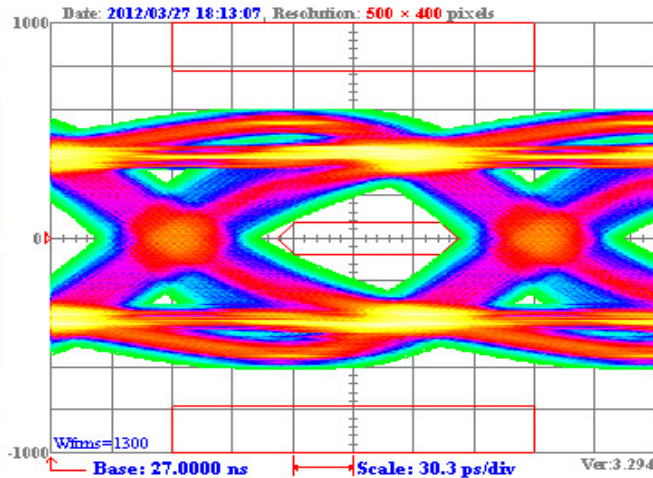


E&E Co., LTD.

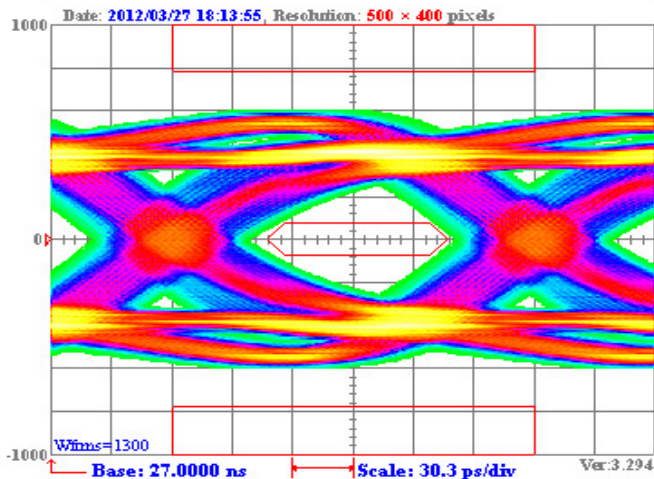
HDMI Eye Diagram Graphic result



Parameter Name: HDMI Eye Diagram D0	
Display Mode: Not a standard mode	
dRate: 5.5 Gbits/s; 181.8 ps	V: 400 mV; With HDMI AEQ; Off: 0 mV
CAL: N/A, JGen: 0.30TBit by Ip Result: Pass	



Parameter Name: HDMI Eye Diagram D1	
Display Mode: Not a standard mode	
dRate: 5.5 Gbits/s; 181.8 ps	V: 400 mV; With HDMI AEQ; Off: 0 mV
CAL: N/A, JGen: 0.30TBit by Ip Result: Pass	



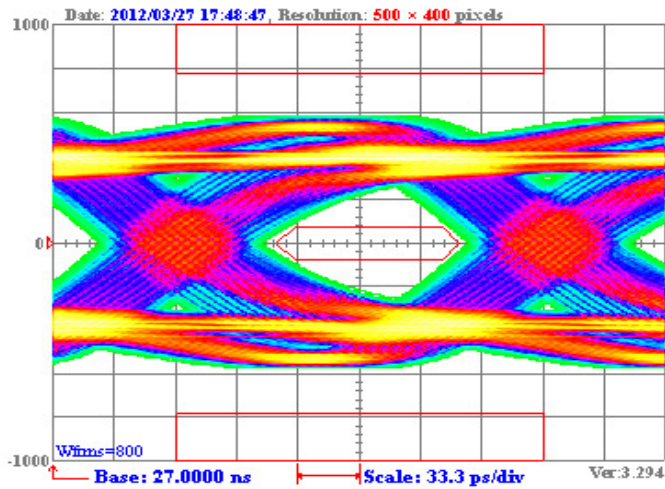
Parameter Name: HDMI Eye Diagram D2	
Display Mode: Not a standard mode	
dRate: 5.5 Gbits/s; 181.8 ps	V: 400 mV; With HDMI AEQ; Off: 0 mV
CAL: N/A, JGen: 0.30TBit by Ip Result: Pass	

10ft 28AWG Elite Series, Silver Plated Copper HDMI Cable

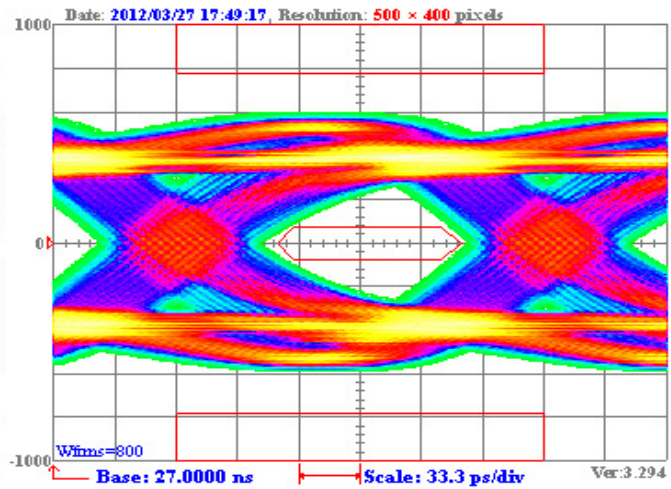


E&E Co., LTD.

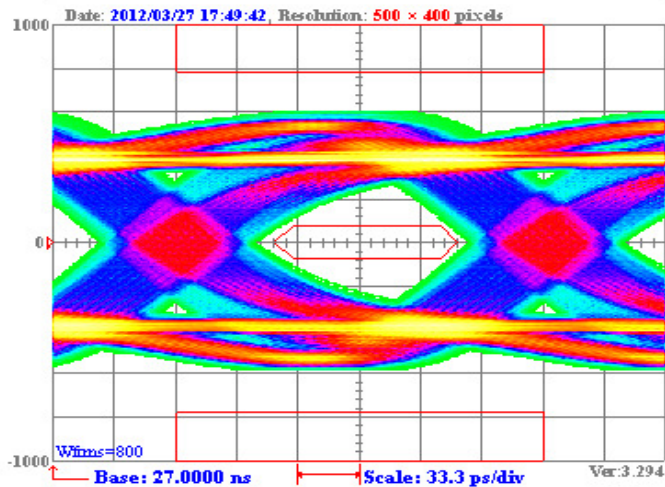
HDMI Eye Diagram Graphic result



Parameter Name: HDMI Eye Diagram D0	
Display Mode: Not a standard mode	
dRate: 5 Gbits/s; 200.0 ps	V: 400 mV; With HDMI AEQ; Off: 0 mV
CAL: N/A, JGen: 0.30TBit by Tp Result: Pass	



Parameter Name: HDMI Eye Diagram D1	
Display Mode: Not a standard mode	
dRate: 5 Gbits/s; 200.0 ps	V: 400 mV; With HDMI AEQ; Off: 0 mV
CAL: N/A, JGen: 0.30TBit by Tp Result: Pass	



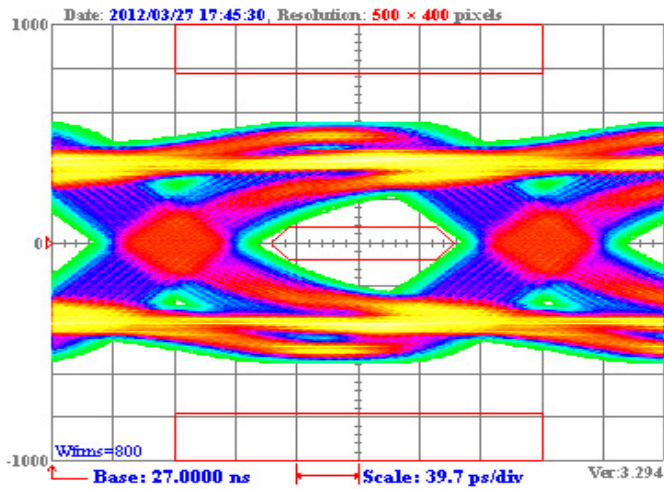
Parameter Name: HDMI Eye Diagram D2	
Display Mode: Not a standard mode	
dRate: 5 Gbits/s; 200.0 ps	V: 400 mV; With HDMI AEQ; Off: 0 mV
CAL: N/A, JGen: 0.30TBit by Tp Result: Pass	

12ft 28AWG Elite Series, Silver Plated Copper HDMI Cable

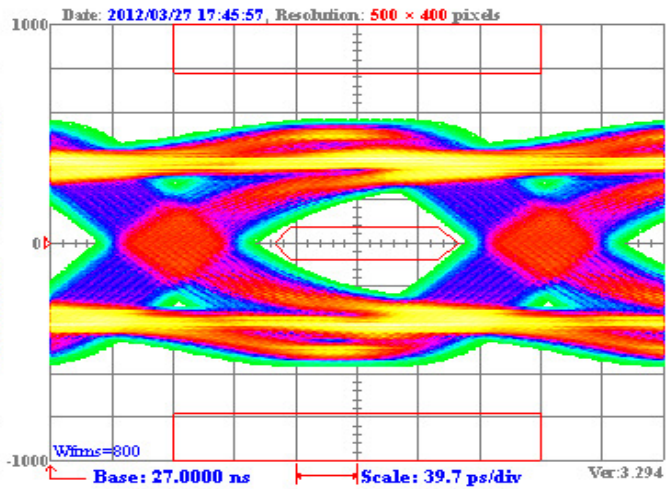


E&E Co., LTD.

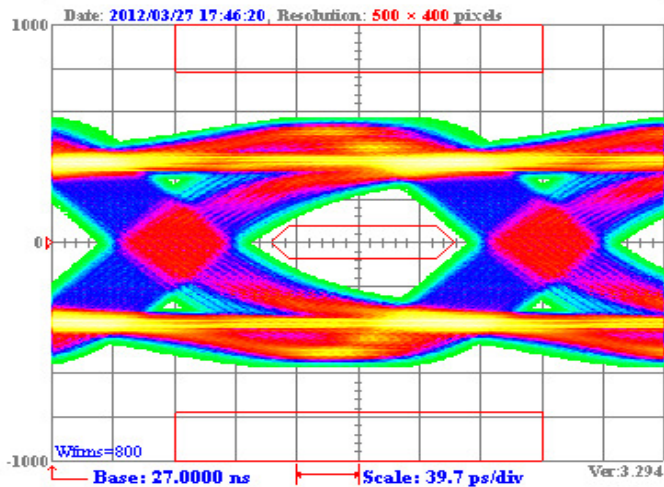
HDMI Eye Diagram Graphic result



Parameter Name: HDMI Eye Diagram D0	
Display Mode: Not a standard mode	
dRate: 4.2 Gbits/s; 238.1 ps	V: 400 mV; With HDMI AEQ; Off: 0 mV
CAL: N/A, JGen: 0.30TBit by Tp Result: Pass	



Parameter Name: HDMI Eye Diagram D1	
Display Mode: Not a standard mode	
dRate: 4.2 Gbits/s; 238.1 ps	V: 400 mV; With HDMI AEQ; Off: 0 mV
CAL: N/A, JGen: 0.30TBit by Tp Result: Pass	



Parameter Name: HDMI Eye Diagram D2	
Display Mode: Not a standard mode	
dRate: 4.2 Gbits/s; 238.1 ps	V: 400 mV; With HDMI AEQ; Off: 0 mV
CAL: N/A, JGen: 0.30TBit by Tp Result: Pass	



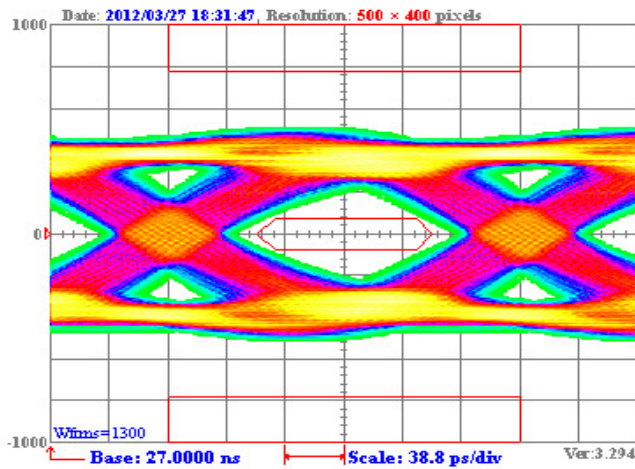
Parameter Name: HDMI Eye Diagram D3	
Display Mode: Not a standard mode	
dRate: 4.2 Gbits/s; 238.1 ps	V: 400 mV; With HDMI AEQ; Off: 0 mV
CAL: N/A, JGen: 0.30TBit by Tp Result: Pass	

15ft 28AWG Elite Series, Silver Plated Copper HDMI Cable with Redmere 1689 IC

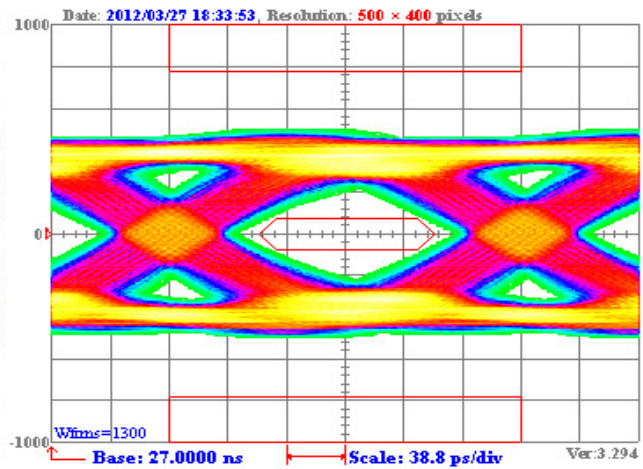


E&E Co., LTD.

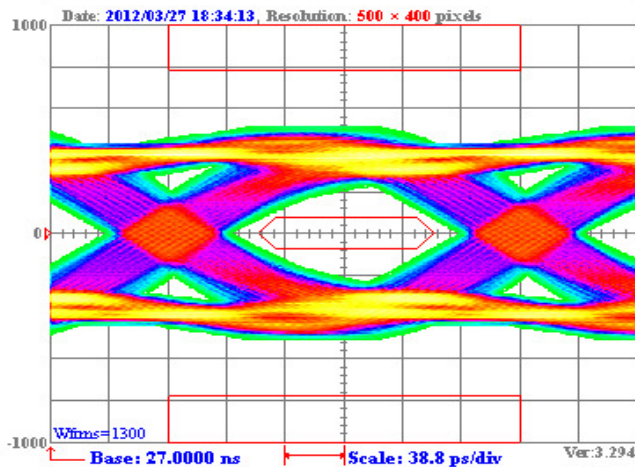
HDMI Eye Diagram Graphic result



Parameter Name: HDMI Eye Diagram D0	
Display Mode: Not a standard mode	
dRate: 4.3 Gbits/s; 232.6 ps	V: 400 mV; Gain: 0 dB; Off: 0 mV
CAL: N/A, JGen: 0.30TBit by Tpl Result: Pass	



Parameter Name: HDMI Eye Diagram D1	
Display Mode: Not a standard mode	
dRate: 4.3 Gbits/s; 232.6 ps	V: 400 mV; Gain: 0 dB; Off: 0 mV
CAL: N/A, JGen: 0.30TBit by Tpl Result: Pass	



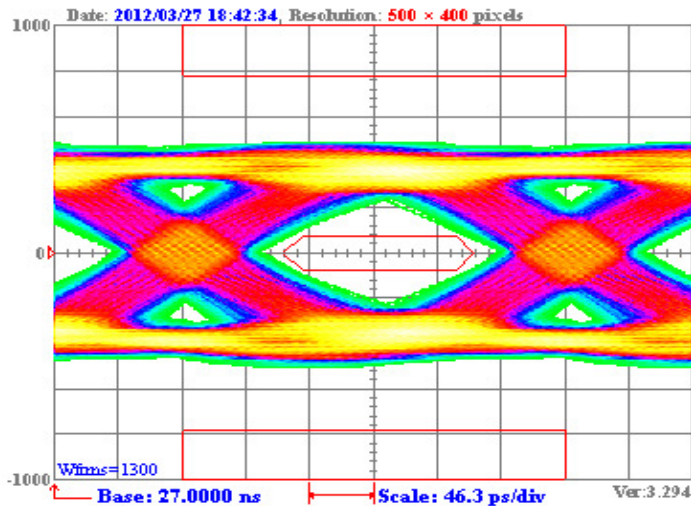
Parameter Name: HDMI Eye Diagram D2	
Display Mode: Not a standard mode	
dRate: 4.3 Gbits/s; 232.6 ps	V: 400 mV; Gain: 0 dB; Off: 0 mV
CAL: N/A, JGen: 0.30TBit by Tpl Result: Pass	

20ft 28AWG Elite Series, Silver Plated Copper HDMI Cable with Redmere 1689 IC

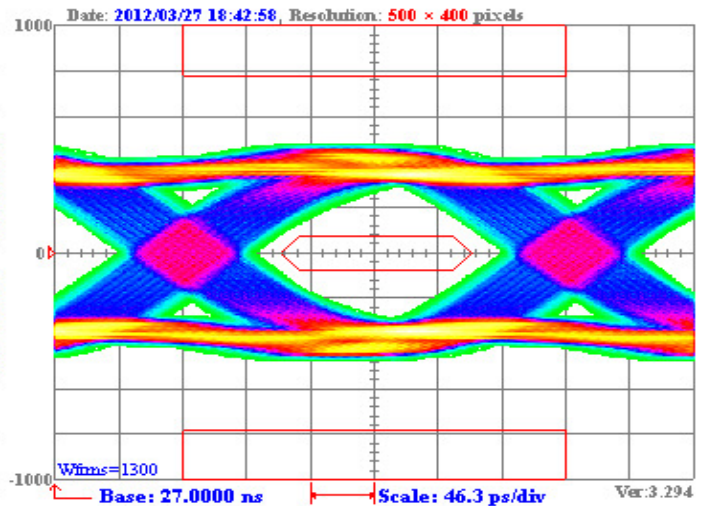


E&E Co., LTD.

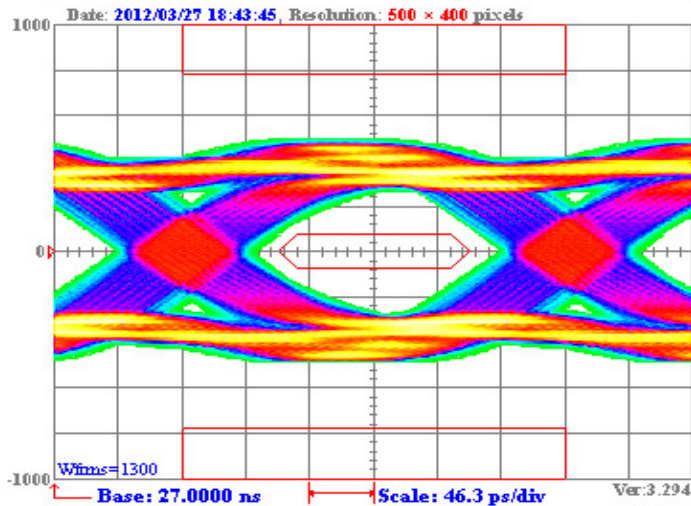
HDMI Eye Diagram Graphic result



Parameter Name: HDMI Eye Diagram D0	
Display Mode: Not a standard mode	
dRate: 3.6 Gbits/s; 277.8 ps	V: 400 mV; Gain: 0 dB; Off: 0 mV
CAL: N/A, JGen: 0.30TBit by Tp Result: Pass	



Parameter Name: HDMI Eye Diagram D1	
Display Mode: Not a standard mode	
dRate: 3.6 Gbits/s; 277.8 ps	V: 400 mV; Gain: 0 dB; Off: 0 mV
CAL: N/A, JGen: 0.30TBit by Tp Result: Pass	



Parameter Name: HDMI Eye Diagram D2	
Display Mode: Not a standard mode	
dRate: 3.6 Gbits/s; 277.8 ps	V: 400 mV; Gain: 0 dB; Off: 0 mV
CAL: N/A, JGen: 0.30TBit by Tp Result: Pass	